

metrologic group®

The advanced solution

6, chemin du vieux chêne · ZIRST · 38240 Meylan · France
Tel :: +33 476-043-030 · Fax : +33 476-907-571
http : //www.metrologic.fr · e-mail : metrologic@metrologic.fr



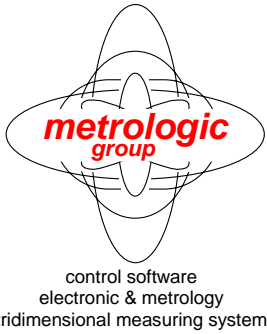
How to obtain security codes online (Web Read)?

metrologic group® has implemented two new ways to easily obtain your **Metrolog XG**®, **Silma XG**®, **Metrolog Inspection V5**® or **μ-log XG**® license and dongle codes from any PC connected to the Internet, as a self-serve option called **Web Read**.

Should you not have access to the Internet, you can always ask to obtain your codes by sending an Email to: hotline@metrologic.fr or hotline-MTV5@metrologic.fr

Important : When installing software or updating it, please uncheck the "Install a license code" box. Once software installed, please follow the proceed below.

- I. The various codes which it is possible to program via WebRead..... 2
- II. If your workstation is connected to the Internet 3
- III. If your workstation is not connected to the Internet..... 5
- IV. How to see the options installed? 7



metrologic group



The advanced solution

6, chemin du vieux chêne · ZIRST · 38240 Meylan · France
Tel :: +33 476-043-030 · Fax : +33 476-907-571
http : //www.metrologic.fr · e-mail : metrologic@metrologic.fr



The various codes which it is possible to program via WebRead

1) The license code of the versions

This code authorizes the access to the various versions of Metrolog XG, Metrolog Inspection V5 or μ -log XG and can always be installed with Metrolog XG, Metrolog Inspection V5 or μ -log XG CD Rom.

For example:

Dongle #00016 – License code=22EA FBF6 439B AF1C

2) Dongle code (level + options)

This code allows to program the protection dongle with the good options. It is from now longer, in order to take into account new options.

For example:

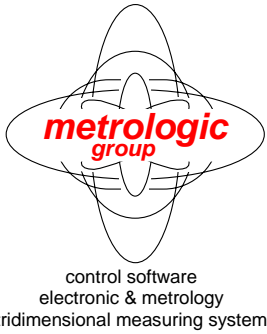
Dongle #00016 =EE69 E3F5 5514 5DF6 1E4C B9A9 DBCA 6073 A20C 457B F929 08BD

3) The license code of simulation (new)

This code gives access to one or several virtual CMM.

For example:

0030001=93A3BE5B1C1EDF72D2B361FE



metrologic group[®]

The advanced solution

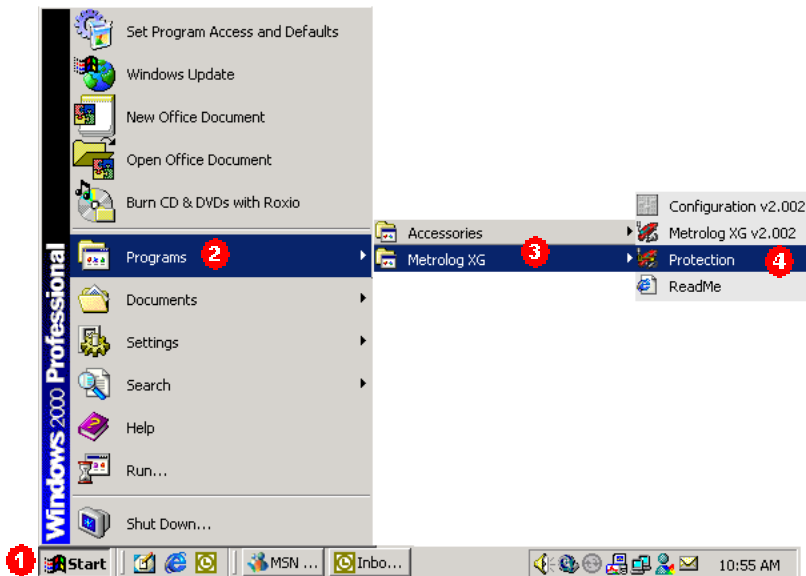
6, chemin du vieux chêne · ZIRST · 38240 Meylan · France
Tel :: +33 476-043-030 · Fax : +33 476-907-571
http : //www.metrologic.fr · e-mail : metrologic@metrologic.fr



If your workstation is connected to the Internet

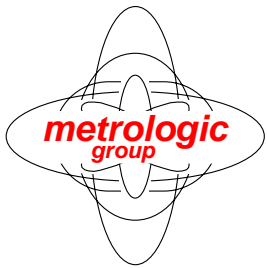
Metrolog XG, Silma XG, Metrolog Inspection V5 and μ -log XG install an utility program named **Security.exe**, located by default in the Metrolog XG, Silma XG, Metrolog Inspection V5 and μ -log XG installation directory.

You can also access it as follows :



- 1 Click on the **Start** menu
- 2 Click on **Programs**
- 3 Click on **Metrolog XG** or on **Silma XG** or on **DELMIA / Tools** (for MIV5) or on **Metrologic Group / μ -log** (for μ -log XG).
- 4 Click on **Protection**

Download your codes automatically through the Internet from the Metrologic server (via **WebRead**) :



control software
electronic & metrology
tridimensional measuring system

metrologic group

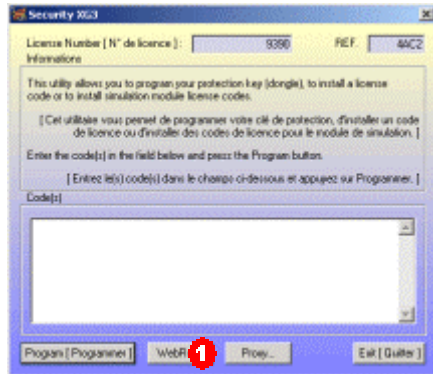


The advanced solution

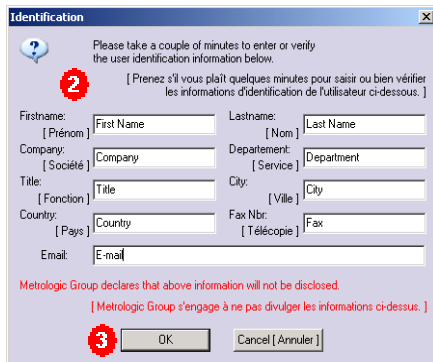
6, chemin du vieux chêne · ZIRST · 38240 Meylan · France
Tel :: +33 476-043-030 · Fax : +33 476-907-571
http : //www.metrologic.fr · e-mail : metrologic@metrologic.fr



Philippe CIMADOMO Holding

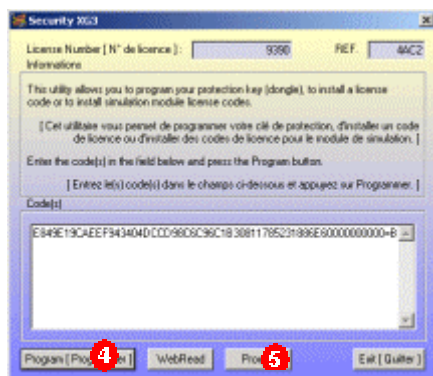


1 From the Security window, push the **WebRead** button.



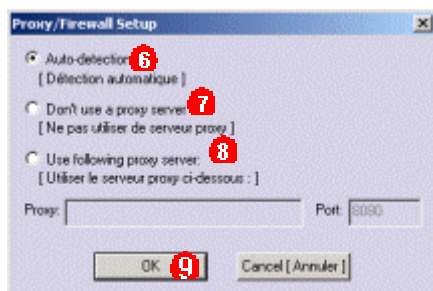
2 Fill out the user identification information (required).

3 and click **OK**.



4 When your codes are displayed, push **Program** to program the key and/or install the licence codes.

5 In the case of difficulties to retrieving the codes through a proxy server, click on **Proxy**.



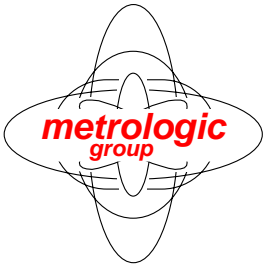
6 Choose the auto-detection method,

7 or choose not to use a proxy server,

8 or choose to enter the address and the port number manually.

9 Click on **OK**.

The following message will appear : **Codes successfully installed**. You can start using your software.



control software
electronic & metrology
tridimensional measuring system

metrologic group



The advanced solution

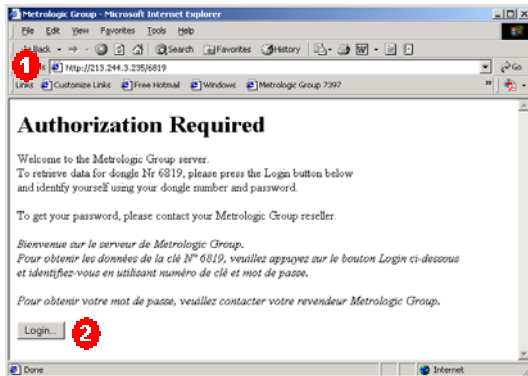
6, chemin du vieux chêne · ZIRST · 38240 Meylan · France
Tel :: +33 476-043-030 · Fax : +33 476-907-571
http : //www.metrologic.fr · e-mail : metrologic@metrologic.fr



Philippe CIMADOMO Holding

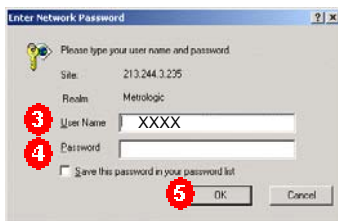
If your workstation is not connected to the Internet

If there is no access to the Internet from the computer where your software dongle is plugged, you can obtain your code(s) from a Microsoft Internet Explorer Window, using any computer connected to the Internet.



1 Enter the following address in your internet explorer address bar: **http://webread.metrologic.fr/XXXX** where **XXXX** is your dongle number.

2 Click **Login**.

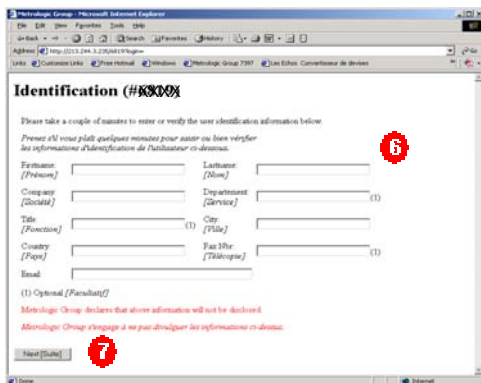


3 enter your User Name (which is your dongle number)

4 and the 5 digit password that was communicated to you by Metrologic.

If the password has been lost or forgotten, send an e-mail to hotline@metrologic.fr or hotline-MTV5@metrologic.fr specifying the dongle number then the password will be resent to you.

5 and click **OK**.



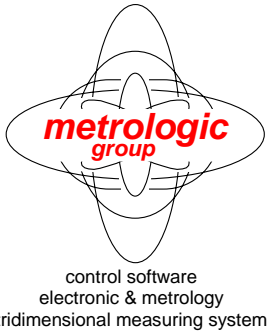
6 Fill out the user identification information

7 and click **Next**.



8 When your codes are displayed, copy them into the Security window on the PC where the dongle is connected (see the following instructions).

NB : If there is no code available, the window will display : - 0-



metrologic group

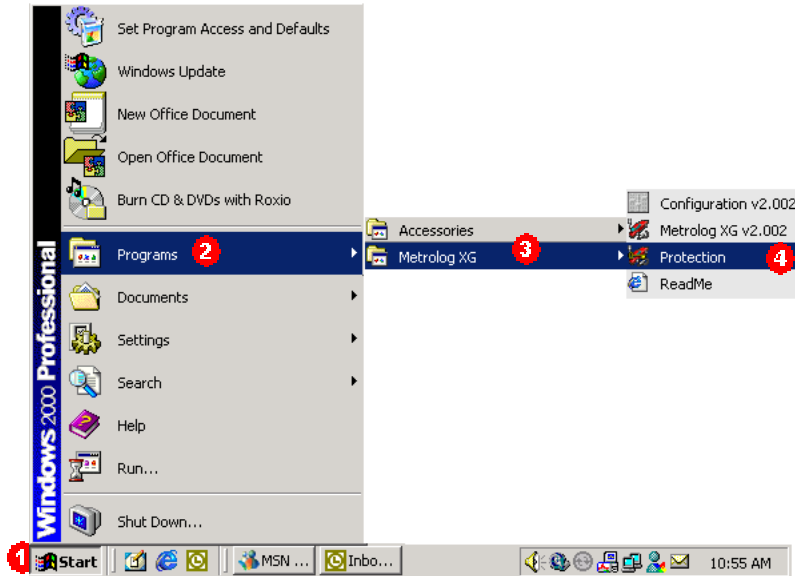


The advanced solution

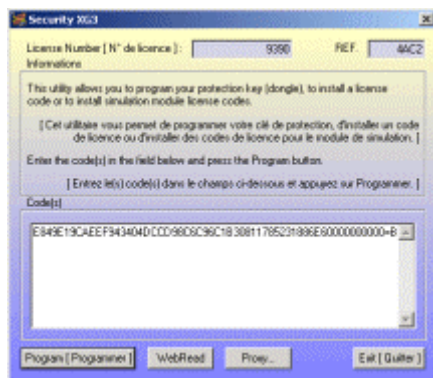
6, chemin du vieux chêne · ZIRST · 38240 Meylan · France
Tel :: +33 476-043-030 · Fax : +33 476-907-571
http : //www.metrologic.fr · e-mail : metrologic@metrologic.fr



Open the program named **Security.exe**, located by default in the Metrolog XG or Silma XG or Metrolog Inspection V5 or μ -log XG installation directory.



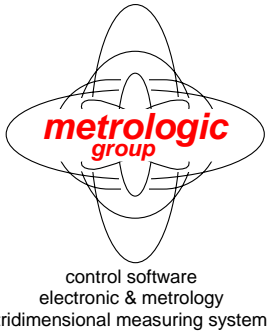
- 1 Click on the **Start** menu
- 2 Click on **Programs**
- 3 Click on **Metrolog XG** or on **Silma XG** or on **DELMIA / Tools** (for MIV5) or on **Metrologic Group / μ -log** (for μ -log XG).
- 4 Click on **Protection**



Once you are in the **Security.exe** Window, copy your codes on the "Code(s)" field and push **Program**.

The following message will appear : **Codes successfully installed !** You can start using your software.

If there is any problem, please e-mail the technical support at :
hotline@metrologic.fr or hotline-MTV5@metrologic.fr



metrologic group [®]

The advanced solution

6, chemin du vieux chêne · ZIRST · 38240 Meylan · France
Tel :: +33 476-043-030 · Fax : +33 476-907-571
http : //www.metrologic.fr · e-mail : metrologic@metrologic.fr



How to see the installed options?

Start the software and in the ? menu (Help in MIV5), select **About this program (About Metrolog V5 in MIV5)**.

Information concerning the licence and the options is distributed as follows:

- On the opening page, only Metrolog XG level appears:



- On the detailed information page (accessible by clicking on the **Information** button), the options list appears in the **Options** group (an option by line) and, if necessary, a **Simulation** group appears, containing one item (a line) by licence of simulation installed:

